



*You produce,  
We move.*

# Excellence is the key.



LCS Group has been operating since 1989 as a System Integrator, offering turnkey, integrated, state-of-the-art hardware and software solutions for intralogistics, airports and industrial automation.

LCS Group includes the following companies:  
LCS, LCS Automation and 4Next Solutions.



LCS S.p.A.  
System integrator



LCS Automation  
Industrial automation



4Next Solutions  
Software for the industry





**LCS** develops intralogistics solutions, including the design, construction, maintenance and renewal of integrated hardware and software systems for internal logistics, industrial automation, baggage sorting and reconciliation.

**LCS Automation** deals with the design, construction and maintenance of installations for industrial automation with strong specialization and particular experience in the automotive sector.

**4Next Solutions** designs and develops highly customized software solutions to increase the efficiency of business processes and add value to internal processing. More specifically, 4Next develops custom-made applications that optimize data flows for all logistic processing requirements.

**2020**, LCS Group consolidates its position on the Italian and foreign markets by acquiring part of the shares of Samind, a company specialized in the production of special mechanics, and Manganorobot, specialized in robotics solutions.

**S.A.M.Ind.**  
AUTOMAZIONE  
INDUSTRIALE  
10100 BORGONE SUSA-TORINO-ITALY

**MR**  
Manganorobot

All the companies of LCS Group share the same mission:

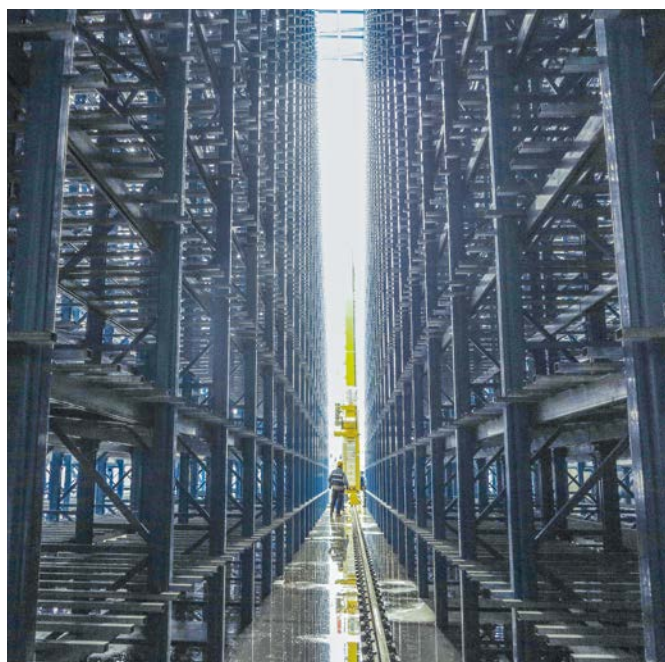
*By integrating excellence into our customer's projects, we help in carrying out the most innovative, reliable and suitable solution to any need. Always delivering the highest performance and value.*



# An experienced and reliable method.



LCS has 30 years of experience in the intralogistics and automation sectors. These years of ***intense exchange*** with big and small companies, always delivering them the best solutions, have allowed us to develop a reliable work method.





### Analysis

In depth analysis of the customer's needs and project data processing



### Project definition

Definition of the functional specifications in accordance with the customer's requests



### Execution

Integrated development: mechanical, electrical, software



### Installation

Complete management of the entire on-site fitting



### Start-up & Service

Staff training, maintenance and 24/7 full support



# A shared project always brings out the best re



## Listening, understanding, sharing, caring

LCS manages the entire process, from initial analysis to technical design and software development through to implementation, ***always working by your side.*** Together, with this shared work, we develop the best solution able to ***create value*** and increase customer satisfaction.

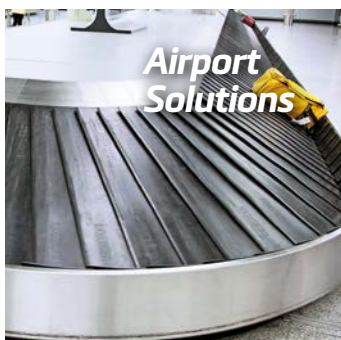




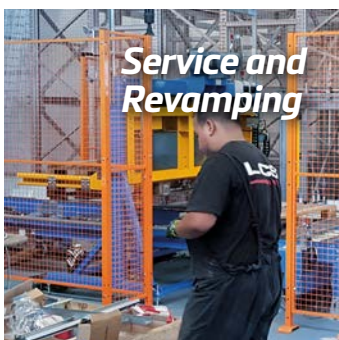
sults.



**Airport  
Solutions**



**Service and  
Revamping**



**Industrial  
Automation**



**Software for  
the Industry**



### **We believe in Green Warehousing**

LCS designs and manufactures **green** automatic warehouses and material handling systems. Sustainable solutions on an economic, environmental and social level with positive outcomes in terms of **corporate image** and **competitiveness**.

- Reduction of environmental impact in terms of harmful emissions
- Reduction in the consumption of resources by supplying them from alternative sources
- Sustainability in facility design.



Intralogistic Solutions

# Whether goods or data: everything flows smooth



We've been in intralogistics for 30 years. With passion we **design, engineer and implement solutions** that organize and optimize the handling of materials and all the related information flows in factories and warehouses.

Always **reliable, cutting-edge** and **customized** solutions that guarantee efficiency and control from the end of the line to the warehouse up to the shipping area. Tailor-made solutions, with the possibility to upgrade the plants and the software modules or to design the warehouse and the material handling system from scratch. LCS SpA, the Group's parent company, is specialized in intralogistics and Industry 4.0.



## Automatic warehouses

We design and implement automatic storage solutions with attention to every detail: perfectly integrated mechanics, accurate development of the software and precise plant maintenance. The **internal processes are always under control** and simple to manage. Customer satisfaction guaranteed.



thly.

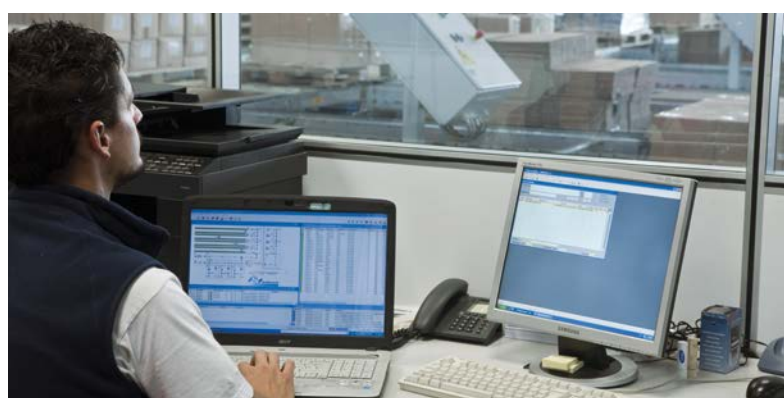


LCS S.p.A.  
System integrator  
Intralogistics



## Material handling systems

We craft solutions that transform warehouses and production facilities by shifting costs into profits. Better performance, reduction of errors and downtime, constant control and therefore **greater efficiency**. Innovation is fundamental to us.



## Integrated software solutions

LCS develops complete software solutions for automatic warehouses and material handling systems. **LogiMHS** (Material Handling System) is our modular solution for material handling and management, which we adapt and customize according to the most diverse project requirements.

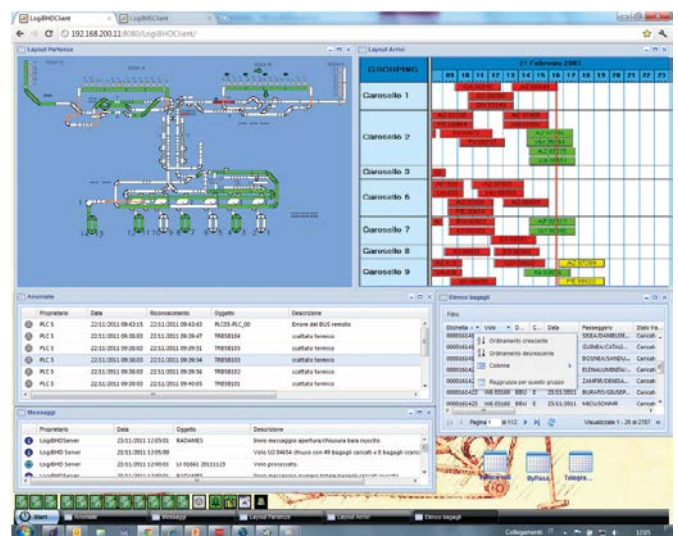


# Taking off with the world's leading airlines.



Since 1990, we have been engineering and implementing complete airport systems for baggage and cargo handling. Ensuring that the baggage arrives at the correct destination. This is why we optimize airport logistics, improve baggage flow quality, tracking accuracy and process supervision.

Today, 50% of luggage in Italy is handled by **LCS proprietary software applications**, our systems are installed in some of the most important Italian airports. The Airport division of LCS SpA is highly specialized in airport logistics, with several projects all over the world.







## Complete airport systems

We design and implement customized baggage and cargo handling solutions with mechanical component integration, software development and system maintenance.

The process of baggage handling in departure, transit and arrival is managed with **maximum efficiency** thanks to our **LogiBHS** proprietary software, conceived for airports of all sizes. Information to handlers, airlines and airports are guaranteed in real-time.





## Service and Revamping

# The proper functioning of your plants is our m



We at LCS ***take care of all the phases of a plant's life and of every implementation***, even those installed by third parties.

We manage the start-up phase with operator training and provide remote assistance 24/7. We analyze data and system performance to plan preventive maintenance interventions.

We carefully evaluate the need for revamping interventions, aimed towards electromechanical and software upgrades. We thus ***extend the life cycle of the systems***, guaranteeing a short pay-back period and considerable savings compared to a new installation. In 2018 LCS SpA established a business unit entirely dedicated to service and revamping.



major concern.

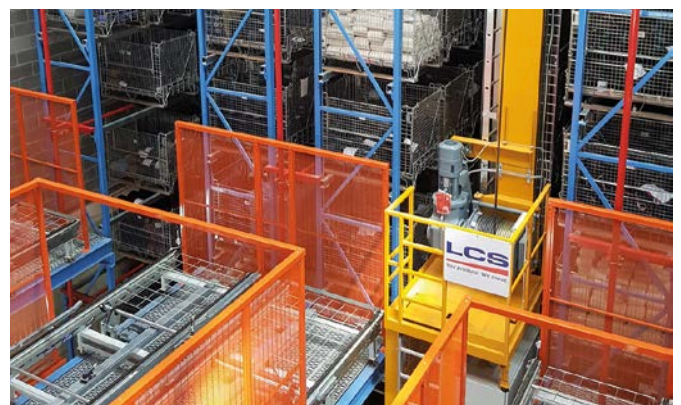


LCS S.p.A.  
System integrator  
BU Service



### Life cycle service

**Attention to detail** is fundamental to us, throughout every phase of the plant's life. Our technical departments are organized at various levels in accordance to their automation specialization.



### Revamping - technological upgrades

All our revamping activities are specifically designed to upgrade the customer's particular plant. **Giving new life** to all mechanical, electrical and software components. This also includes any CE marking certification requirements.



Industrial automation

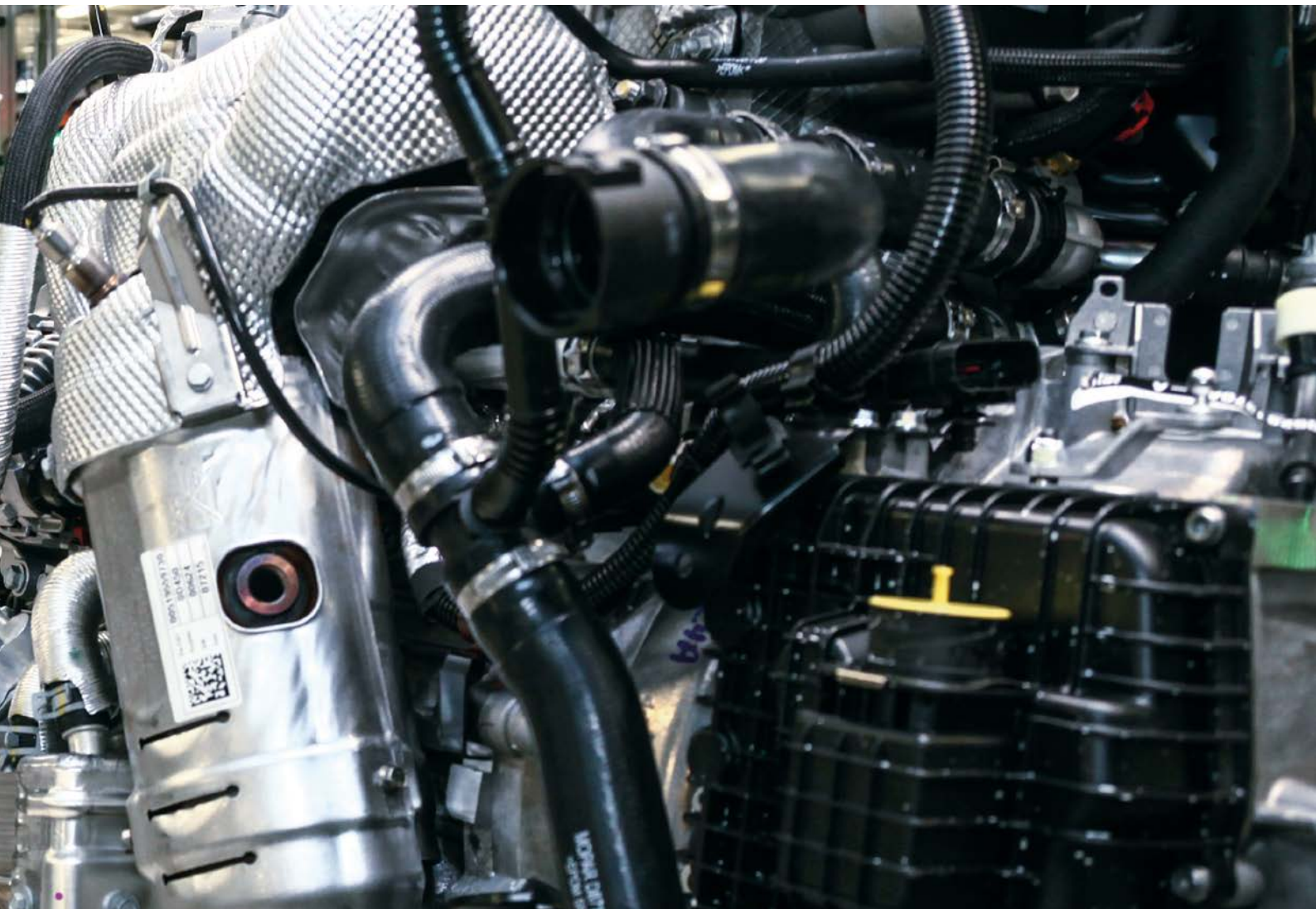
# Enhancing your company's success.



We deal with **automation at 360 degrees**. We manage **turnkey projects** concerning production processes, robotized lines and industrial electrical systems, with a special focus on the automotive industry. We have carried out projects all over the world for major car manufacturers, from Europe to the United States, from Brazil to China. **Accuracy, safety** and **high quality** are our hallmarks.

LCS Automation, is the company within LCS Group that is responsible for the **design, construction, installation** and **maintenance** of mechanical assembly lines, welding lines and robotic cells, machining centers, electro-mechanical installations and special mechanics.





## Automotive

We are **specialists** of the automotive sector thanks to numerous projects carried out for major car manufacturers **all over the world**. LCS Automation manages and constructs welding lines, mechanical assembly lines and robotic cells; delivering turnkey solutions.



## Installation and programming

Starting from the project up to the complete commissioning of the system, LCS technicians ensure **high quality standards** in mechanics, PLCs and robotics programming.



## Industrial automation

Enhancing your company's success.

---



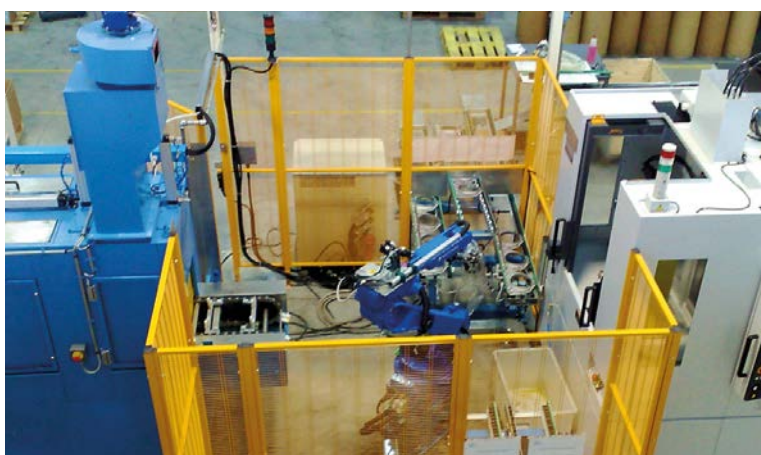
LCS Automation, with a company staff of experts and highly qualified technicians, stands as an effective and structured company in capturing technological evolution and implementing **highly productive and reliable solutions** for its customers.



### Industrial electrical installations

**Expertise and innovation** are in the foreground throughout the electrical design, the construction of electrical systems and cabinets and the following maintenance activities, including the material and baggage handling sector.





### Special mechanics

Design and construction of robotic systems and **special machines** for quality control and production processes such as milling machines, metal and plastic deburring, coating, screwing, ultrasonic cutting.



### Service and Revamping

We take care of the entire life cycle of our installations guaranteeing highly qualified electromechanical **assistance and maintenance** and targeted revamping interventions.



Software for the industry

# An intelligent warehouse is an efficient wareh



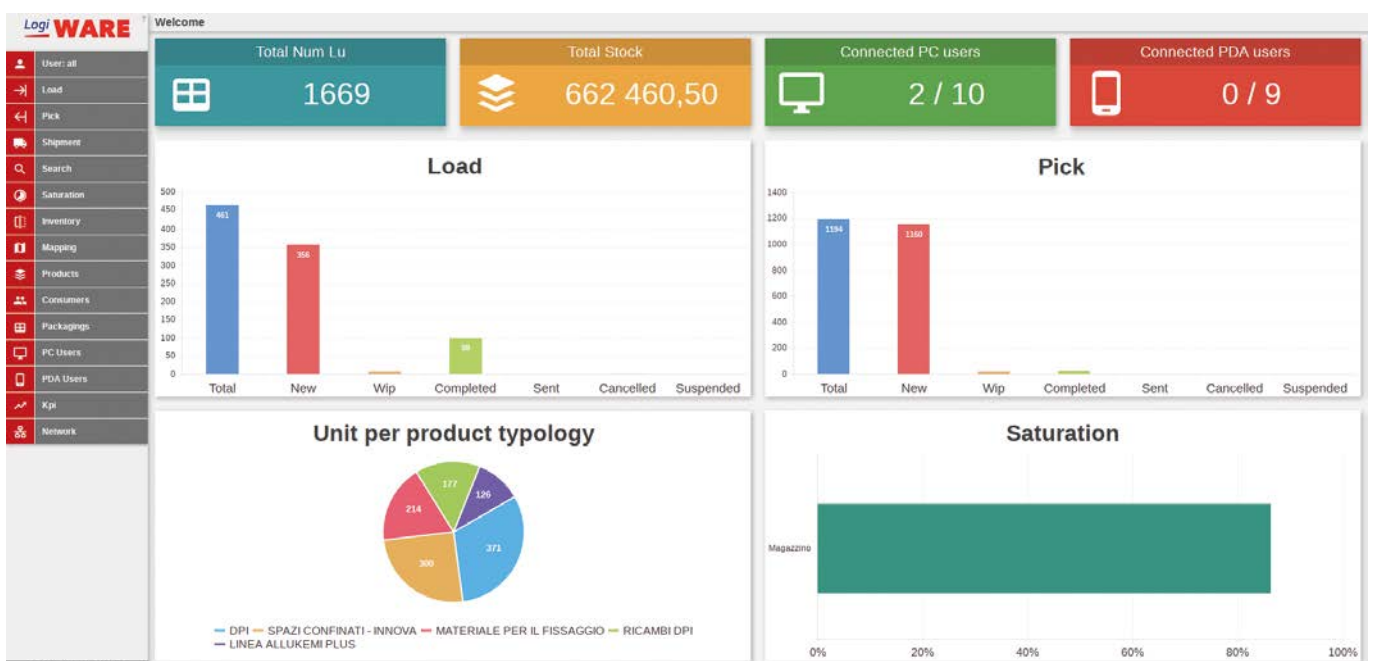
We design and develop **customized WMS software solutions** for the management of traditional warehouses, operated with radio frequency terminals and voice systems. We provide high value solutions due to our methodology, consisting of 4 key concepts: **"Listening, Understanding, Resolution, Assistance"**.

This is how, in a short time and at a reasonable cost, we transform the warehouse and its processes. **4Next Solutions** is the company within LCS Group that develops web-based and highly customized WMS (Warehouse Management System) software solutions, **designed to increase the efficiency** and strength of processes related to manual warehouses.





ouse.





Why LCS

# LCS is all about people, their expertise and exc

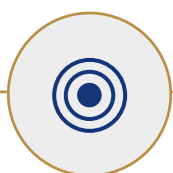


## Solutions in continuous growth



### Technological partnerships

Our technological partnerships allow us to always guarantee cutting-edge solutions



### Optimized solutions

Solid know-how in the design of logistics processes with a 360° vision



### Trouble free fulfillment

Precision and reliability during project execution through strong and dedicated project management



### Guaranteed support

Our engineering and developing teams provide continuous support, even remotely



# ellent solutions.



## Our numbers make all the difference

**+100**

AUTOMATION  
& SOFTWARE  
EXPERTS

**+300**

PROJECTS  
IMPLEMENTED

**+200**

SATISFIED  
CUSTOMERS

**+30**

COUNTRIES  
IN THE WORLD

**+1.000**

KM OF  
CONVEYORS  
INSTALLED

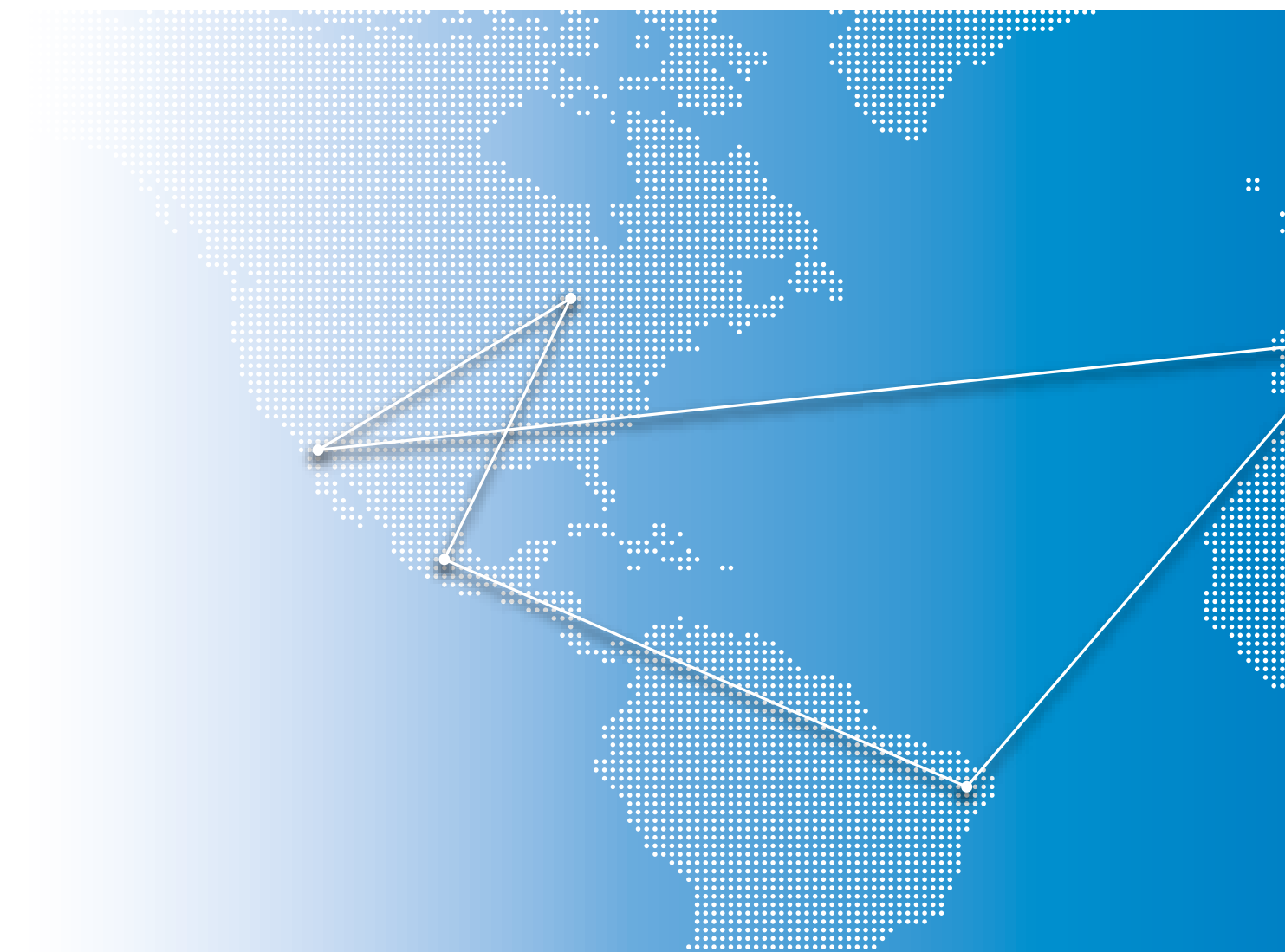
**+50.000.0000**

SUITCASES  
HANDLED  
PER YEAR





# Reaching out to the whole world.



The reliability of LCS Group is proven by the excellent references in the intralogistics, airport and automation fields which account to more than **300 projects** implemented and currently functioning in Europe, the United States, Mexico, South America, China, India, Saudi Arabia and Qatar.

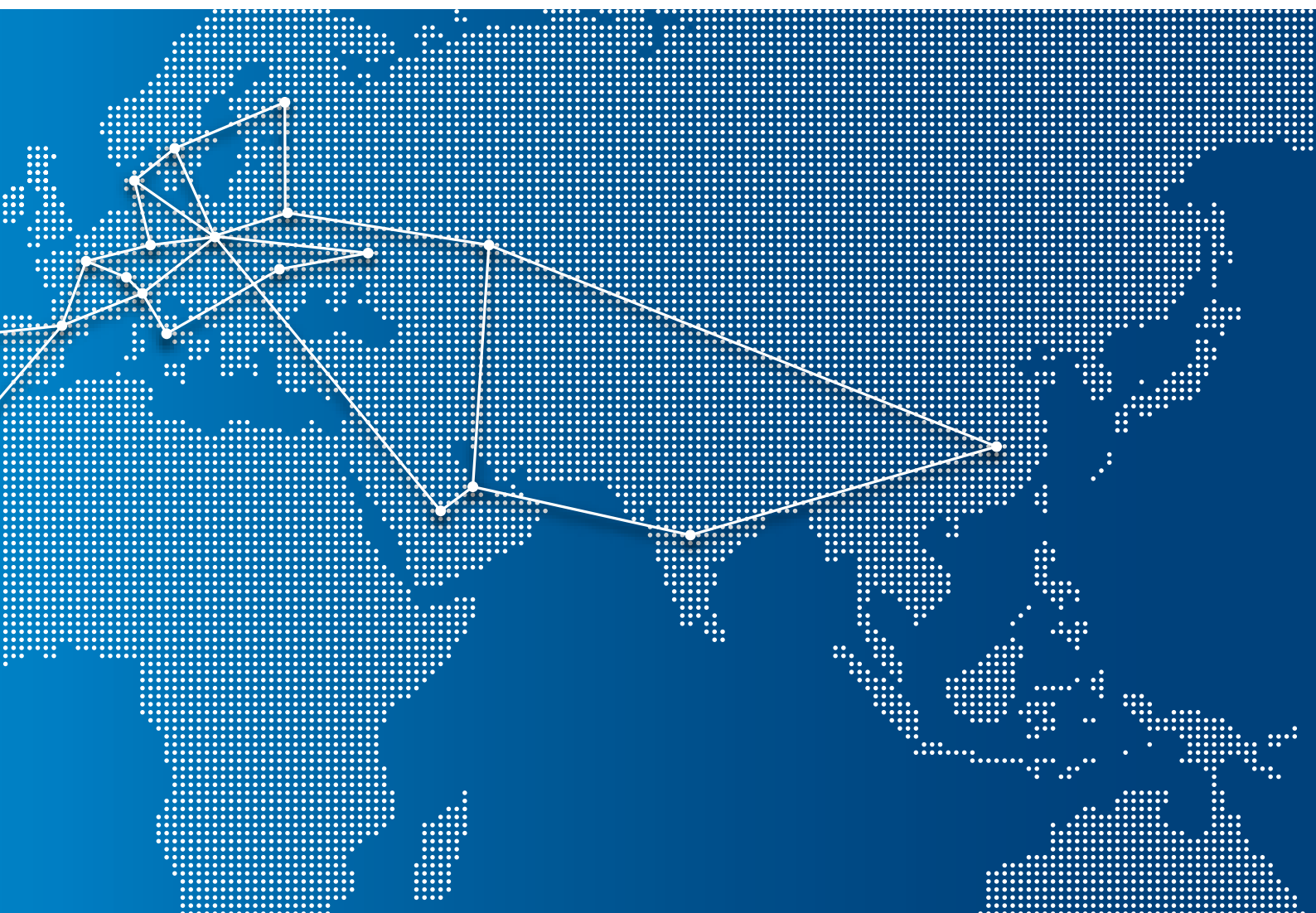
LCS has been operating for thirty years in multiple sectors: from food to medical, from distribution to automotive. Different sectors that invite us to always seek for new solutions. To **be innovative** and never stop.

## The sectors of activity

Industry  
Food&Beverage  
Textiles&Luxury  
Medical-Pharmaceutical  
Distribution  
Airport Logistics  
Automotive









Intralogistic Solutions  
Airport Solutions  
Service & Revamping  
Industrial Automation  
Software for the Industry

# wwe



**LCS S.p.A.**  
**System integrator**

Via Bernini, 30  
20865 Usmate Velate (MB)  
Tel +39 039 6755901

**Roma office**  
Via Leone XIII, 95  
00165 Roma  
Tel +39 06 39870228

**Reggio Emilia office**  
Piazza Gramsci, 2  
42035 Castelnovo ne' Monti (RE)  
Mob +39 346 7958765



**LCS Automation**  
**Industrial automation**

Via M. D'Antona, 41  
10040 Rivalta di Torino (TO)  
Tel +39 011 9063099



**4Next Solutions**  
**Software for the industry**

22073 Fino Mornasco (CO)  
Via G. Garibaldi, 118  
Tel +39 031 5477375



**Manganorobot S.r.l.**  
**Robotics**

Corso Bolzano, 6  
10121 Torino  
Tel. +39 011 9983407

**Samind S.r.l.**  
**Mechanical production**

Via dei Vernetti, 8  
10050 Borgone Susa (TO)  
Tel. +39 011 9649140

[info@lcsgroup.it](mailto:info@lcsgroup.it)

[lcsgroup.it](http://lcsgroup.it)

Learn more about our solutions  
and explore our case histories  
<https://media.lcsgroup.it/profile>

